

Scaphandres Party

Stage, Light & Video rider

SAM MARY 0033 612 828 038
sam-mary@wanadoo.fr

STAGE:

- Minimum width 8m
- Depth 8m
- Height 5m
- Back drop + side panels + teasers
- Floor must be black (wood, carpet, dance floor...)
- 2 dressing room

WE BRING :

- 2 VIDEO SCREENS (on wheels) + fireproof fabric (for the video screens / see plan page 2)
- 1 Table (on wheels)

1 x light desk ETC smartfade ML (dmx 5 pins)

+ other small luminaires (non dimmable, (16A / 220

THE VENUE PROVIDES:

2 tables (approx 1m x 1m)
5 chairs

2 pocket lamps + 2 headlamps

LIGHT:

MINIMUM 12 x PC (or Fresnels) 1kw

2 x profile 1kw + 4 x profile 1kw (on booms h=2m)

7 PARCANS 1kw (CP62) + 4 PARCANS 1kw (CP62)
(on floor stands)

**NB: the light will be in any case adapted to the equipment of the venue.
(please provide tech rider and plans of the venue)**

THE FOLLOWING LIGHT PLOT IS INDICATIVE

VIDEO:

2 x video beamer
(HDMI /16:9 / mini 2000lumen)

+

2x hdmi cables **(2 x 20m)**

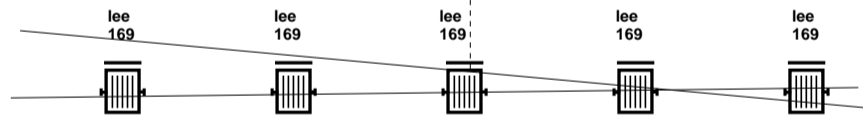
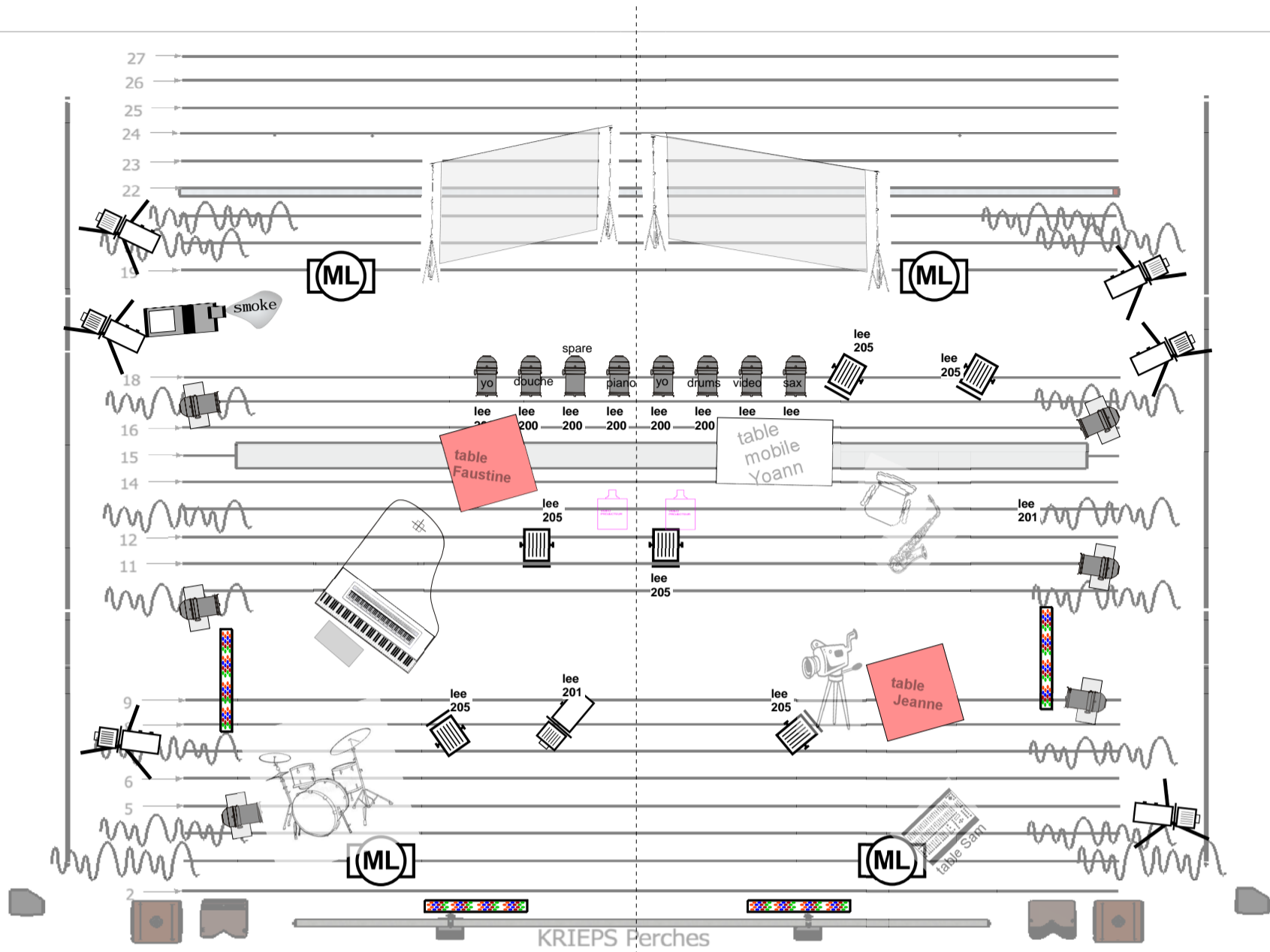
NOTES:

- Please contact SAM MARY for any questions or remarks concerning light & video

- The light desk will be located on stage (stage left). Please provide
dmx 5 pins and electric power (16A / 220v)

Scaphandres Party


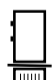


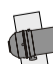
Stage, Light, video SAM MARY 0033 612 828 038
sam-mary@wanadoo.fr





WE USE THE FOH IN PLACE

Scaphandres Party / Light & Video


THE VENUE Provides:

-  11 x PC (or Fresnel) 1kw
-  1 x profile 1kw ADB DW105
- +
-  6 x profile RJ613 (on booms h=2m)
-  8 PARCANS 1kw (CP62)
- +
-  6 PARCANS 1kw (CP62) (on floor stands)

 6 x led bars
Martin rush batten
AU SOL

 4x ayrton levante

THE COMPANY Provides:

-  1 x light desk
- ETC smartfade ML
- dmx 5 pins

**tout le mobilier de scene
(table, écrans, chariots VP,**