

*** De l'autre côté ***

La Bête à Plume Company

Show Length : 50 min

Personal on tour : 1 stage manager, 2 performers

Show setup length: 8 hours (ideal)

Stage size :(adaptable according to configuration)

Opening : 8m (minimum 7m)

Depth : 10m (minimum 6m)

Wall to wall: 12m (minimum 9m)

Height : 6m50 (minimum 4,50m)

FRONTAL AUDIENCE (some seats could be condemned for more visibility)

Contacts

Technical

Andréanne Thiboutot (technical contact for the company)

cielabeteaplumes@gmail.com

+32 484 67 67 34

Hugues Girard (stage manager)

girard.hugues@gmail.com

+32 484 62 68 58

Charlotte Plissart (creator)

charlotteplissart@gmail.com

+33 6 65 03 40 37

Diffusion / Tour

Christine Willem Dejean / Mtp Memap

Christinedejean@mtpmemap.be

+32 497 57 97 90

Production

Isabelle Du Bois

cielabeteaplumes@gmail.com

+32 471 01 91 33

+33 6 33 93 18 79

This rider is an integral part of the contract. In case of a necessary adaption to your theater please contact the stage manager.

STAGE :

Italian style curtain (4 sideways + german style curtains if the walls are too bright)
2 half black backdrop with a possibility of opening in the center
A fake backdrop of 3m length is under perched in front of the 2 half backdrop
(cf plan) Total darkening on stage and in the theater (True Black)
Ground (Black) Sleek and flat. Ground carpet brought by the company.
Scenography : 1 easel, 1 Table, 1 Chair, 2 «screens», 1 Door.

SOUND :

To be provide by the organizer :

Stereo broadcast system adapted to the theater
2 speakers on stand in the 4th sideways also used as monitors
1 mixer adapted to this configuration (min 2 inputs)
2 passive DI in the booth (for the computer)+ mini-jack cable

Provided by the production :

1 computer to send the musical tracks.

LIGHT :

ATTENTION : A total black in the theater is essential.
The implantation of the lights should be made before our arrival.

To be provided by the organizer : (see the plan of following page)

15 Plano convex spots (PC) 1kw
4 Plano convex spots (PC) 2kw
9 Profiles spot Robert Juliat 613 1kw (5 with template/cookie holder)
4 Profiles spot Robert Juliat 614 1kw, 2 on platines au sol
11 PAR 64 (CP62)
2 Pin spot T36
4 SUNSTRIP

Gel : Lee Filter 711 (2x613, 1xPAR, 8xPC), 202, (5x614, 1x613), 116 (4xPC), 104 (2x613, 2xPAR, 1xPC), 180 (4xPAR), 136 (2xPAR), 181 (1xPAR, 1x PC), 363, 079, 132,183 (1xPC)

ROSCO : 1x 110 + 1x 132 for BT

Black aluminium Gaffer tape

Provided by the production :

1 computer in the booth with an entecc.
Lamp integrated to the easel + Wifi system dmx and battery
Wooden lamp man + wifi system dmx and battery

BOOTH :

Thanks to prepare your technical material considering that technique sound+light will be managed by one person only.

This rider is an integral part of the contract. In case of a necessary adaption to your theater please contact the stage manager.

- De l'autre côté - Fiche technique 1.1 - 01/09/22

This rider is an integral part of the contract. In case of a necessary adaption to your theater please contact the stage manager.

- De l'autre côté - Fiche technique 1.1 - 01/09/22

DRESSING ROOMS

A dressing room with a fresh water access, clean and warm, available from our arrival. With chairs, iron, ironing board, mirror, towels, wi-fi access.

Drinks and snacks are welcome: coffee, infusions, organic fruits and dry fruits, from local and/or fair trade origin when possible.

ACCESS AND ACCOMODATION :

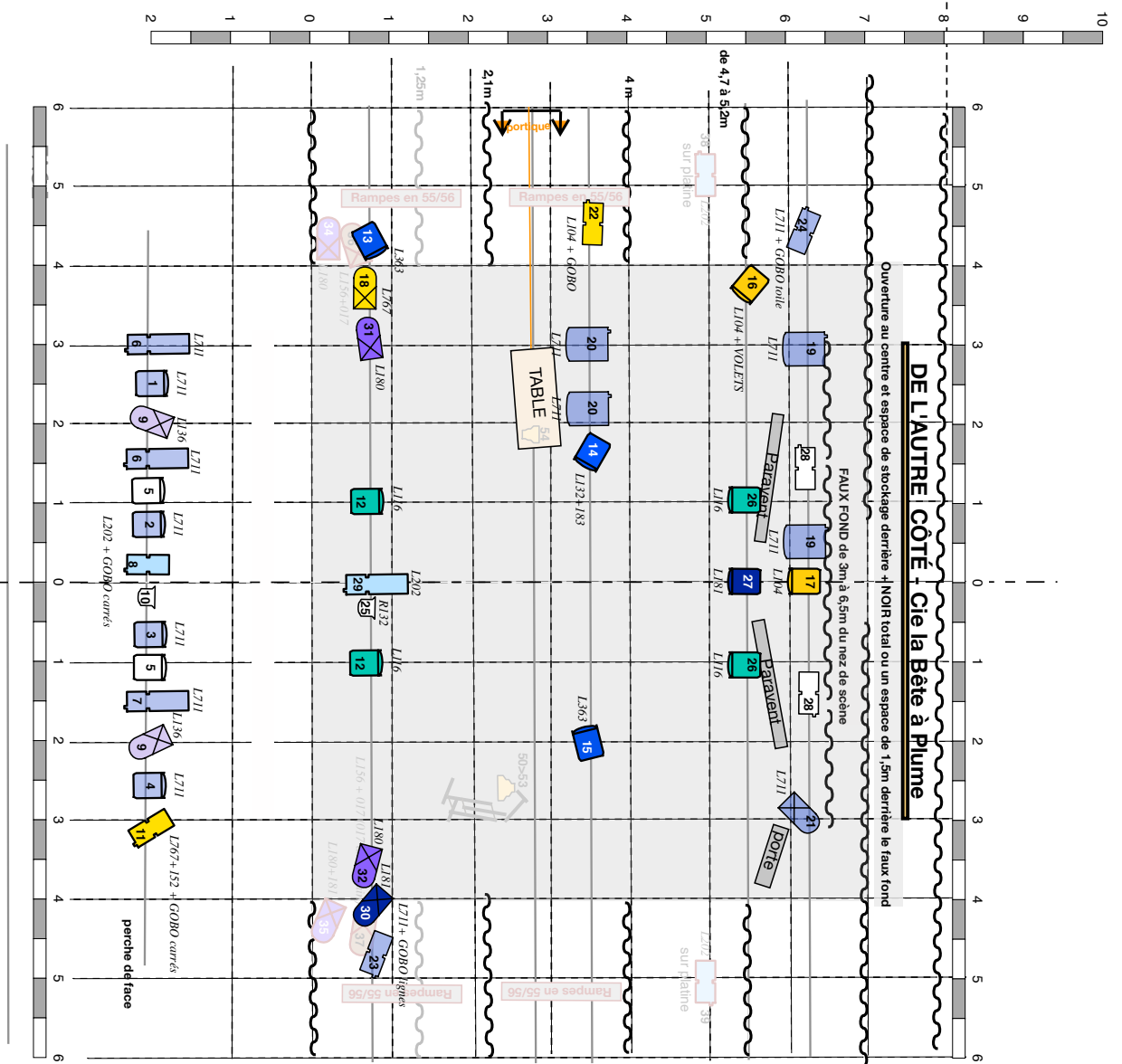
Preview an access and parking for the van of the company for unloading and loading, a parking at the accommodation, and eventual parking authorizations.

Preview accommodation and meals for 3 persons. 1 intolerance to Gluten and Dairies.

If the schedule of show ending doesn't allow a return to Brussels on the same day it's also necessary to preview an accommodation for the night following the performance.

This rider can be modifier since the live show is always in evolution.

Feel free to contact us in case of any problem or for questions regarding adaptation. If you theater seems too little, some amenities may be possible to make it possible.



PLATEAU :

Ouverture au cadre de scène : 8 m pendrilloné
 Profondeur : 6,5 m nez de scène - FAUX FOND
 + 1,5 m (1m minimum) derrière le FAUX FOND

Coullisses :
 2m à Jar / 2m à Cour (minimum sur 1 des 2 côtés)

Pendrillonage à l'italienne avec dimensions précises

Occultation totale sur le plateau

Hauteur perche : 6,5m idéale (4,25 m minimum)

Key
 Chapelet

BT - F1 (2)

PAR 64 CP62 (11)

PC 2K (4)

Rampes de sol x 4

Découpe type RJ 613 (9)

Découpe type RJ 614 (4)

PC 1K (15)

Amené par la compagnie:
 LAMPE Bonhomme sur Batterie + DMX wifi
 LAMPE CHEVALET sur Batterie + DMX wifi

54
 50-53

Cette fiche technique fait partie intégrante du contrat.
 En cas d'adaptation nécessaire, merci de prendre contact avec la direction technique.